



Senior Parent Presentation



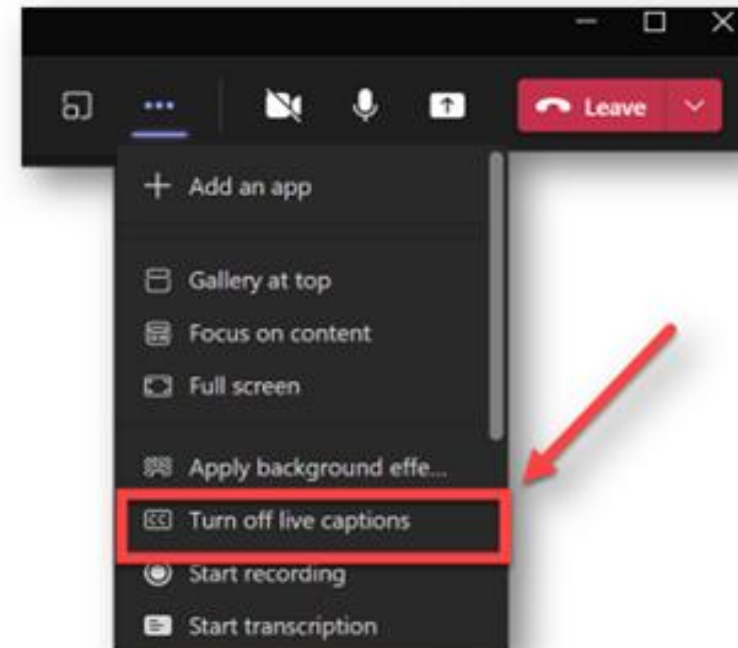
, Your School Counselors

Change Languages

Change Presentation Language



Turn on Translated Captions



Who is your School Counselor?

- ▶ Mr. Tinsley: A-Co
- ▶ Mrs. Schloemer Bryant: Cp-Hi
- ▶ Mrs. Burnett: Hj-Mol
- ▶ Mr. Burch: Mom-Sh
- ▶ Ms. Reese: Si-Z
- ▶ Ms. Grannis: ELL/IEL students
- ▶ Ms. Goldman: PA Magnet students
- ▶ Ms. Williams-Chandler
Department Chair
- ▶ Ms. Fuller: Athletes & 504's



Lesson Overview

- ▶ Important Senior Info
- ▶ Post-secondary options
 - ▶ College admissions factors
 - ▶ Building a college list
 - ▶ 2 year and technical colleges
 - ▶ Military
- ▶ Naviance
- ▶ College application process
- ▶ Scholarships and financial aid

Class of 2023

- ▶ Remember, you must have 4 English, 4 Math, 4 Science, 3 Social Studies, Health/Personal Fitness, and electives to graduate. A total of 23 credits (at least!)
- ▶ Senior Status Reports and transcripts were given out on Tuesday, 23rd in HOMEROOM
- ▶ We encourage all students to participate in community service even though it is not required. Students can earn a cord to wear at graduation if they have completed 80 service hours. They will turn all completed hours in to the Media Specialists.
- ▶ Check out our website!
www.ProudPebblebrookCounselors.com
- ▶ Follow us on Instagram
[@ProudPHSCounselors](https://www.instagram.com/ProudPHSCounselors)

Questions/Preguntas




[https://bit.ly/
ParentQuestions2023](https://bit.ly/ParentQuestions2023)

GRADE POINT AVERAGE REMINDERS

- ▶ Cumulative (or overall) GPA
 - ▶ Both GPAs on your transcript are cumulative
 - ▶ These GPAs include electives in addition to core
 - ▶ **Most colleges recalculate GPA** using your transcript and will not consider your Pebblebrook GPA
- ▶ Academic or Core GPA (NOT on transcript)
 - ▶ Only **English, Math, Science, Social Studies, and World Languages** courses
 - ▶ Can be weighted or unweighted
 - ▶ Most colleges are interested in only the academic classes
- ▶ HOPE GPA
 - ▶ Academic, weighted GPA
 - ▶ Weights differently than Pope
 - ▶ **NOT on transcript**



Pebblebrook's GPA calculation

 Pope High School
3001 Hembree Road
Marietta, GA 30062
School Phone: 770-578-7900
Fax: 770-578-7902

Ninth Grade Entry Date:
Diploma Type:
Grad Date:
Enrollment Status:
Grade Level:
Birthdate:
CCSIDID:
State GTID:

Official Georgia Standard Student Transcript

Cumulative Weighted GPA: 3.000
Cumulative UnWeighted GPA: 3.000
AP Credits: 8.000
Total Credits Earned: 6.000

Cumulative Weighted GPA: 3.000
Cumulative UnWeighted GPA: 3.000

Cumulative = EVERYTHING on the transcript (core + electives)
Weighted = Pebblebrook's weight (.5 for Honors, 1.0 for APs)
Unweighted = No weight at all!

SAT and ACT Dates/Deadlines

Fall 2022 SAT Dates and Deadlines

SAT Date	Registration Deadline	Late Registration Deadline (U.S. Only)	Score Release Date
* August 27	July 29	August 16	September 9
* October 1	September 2	September 20	October 14
November 5	October 7	October 25	November 18
* December 3	November 3	November 22	December 16



Do you receive Free or Reduced Lunch?

What you receive:

- ▶ **2 SAT Fee waivers**
- ▶ **4 ACT Fee waivers**
- ▶ **Waived college application fees at participating schools**

How do I get the waivers?

- ▶ The person who applied for the FRL needs to search their email for the confirmation letter from Heidi.Groves@cobbk12.org
- ▶ Forward email or Screenshot of that letter to Jullynn.Williams-Chandler@cobbk12.org.
 - Must include student's name
 - Must be for the 22-23 SY
- ▶ Student will be emailed the waiver codes.

If you haven't tested yet or are trying to raise your score, **test Aug/Sept/Oct/Nov/Dec**

Pay attention to **registration deadlines** AND **college deadlines**

“Official” test scores for colleges must be sent directly from the SAT or ACT.

Pebblebrook does NOT send test scores.
Scores are NOT on your transcript.

www.fairtest.org to see all test optional colleges



www.collegeboard.org

Other Necessary Tests

- **Accuplacer** – Placement exam for two year & technical colleges like Chatt Tech, Atlanta Metro College, Ga Highlands, West Georgia Tech and Perimeter College at GSU
 - Find a test center: <https://studentportal.accuplacer.org/#/studentsitesearch>
- **ASVAB** - a multiple choice test used to determine qualification for enlistment in the United States Armed Forces.
 - Identifies skills & abilities
 - Provides career exploration information
 - Links achievement with interest
 - Assists planning work-related courses
 - Helps identify potential career path
 - Does not obligate students to military!
 - It is free!

Sign up to
take the
ASVAB on
Oct 12th PSAT
day.

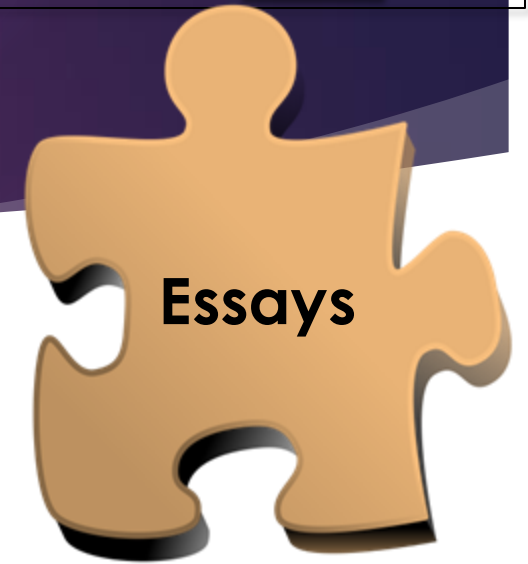
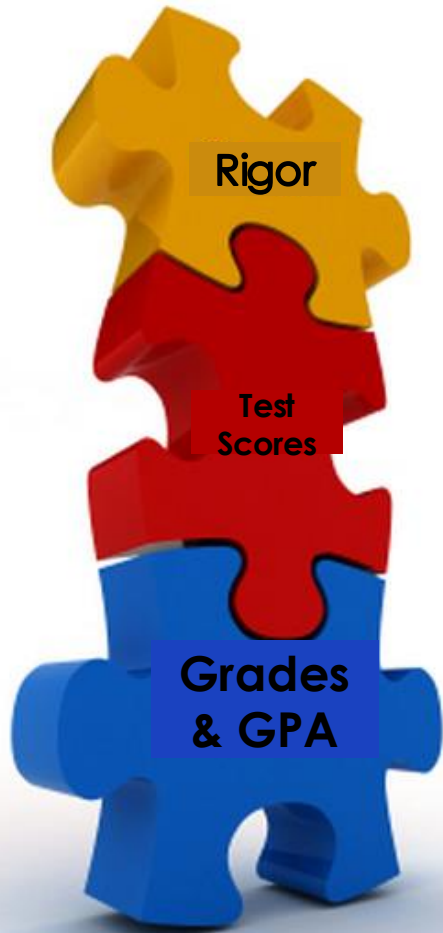


Questions/Preguntas

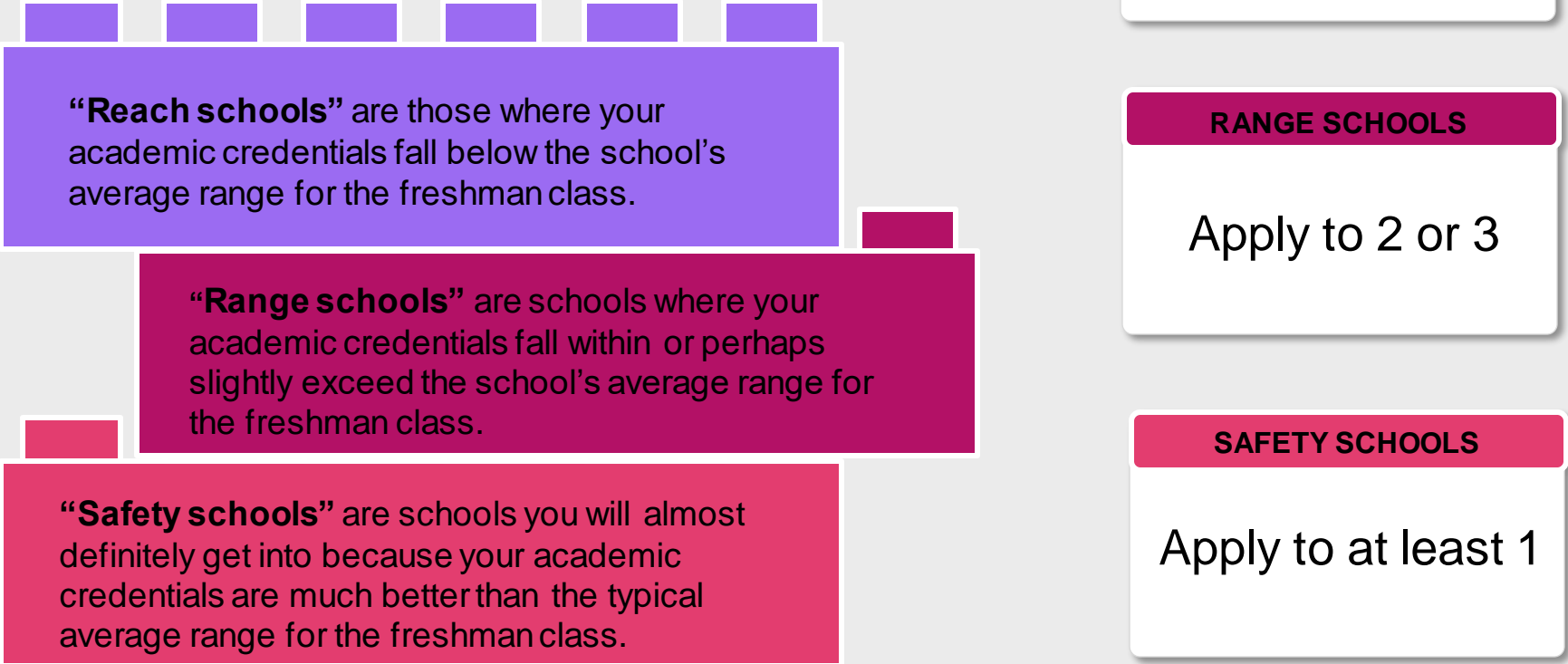


[https://bit.ly/
ParentQuestions2023](https://bit.ly/ParentQuestions2023)

Know the Factors for College Admission



BUILDING A COLLEGE LIST



“Reach schools” are those where your academic credentials fall below the school’s average range for the freshman class.

“Range schools” are schools where your academic credentials fall within or perhaps slightly exceed the school’s average range for the freshman class.

“Safety schools” are schools you will almost definitely get into because your academic credentials are much better than the typical average range for the freshman class.

REACH SCHOOLS

Apply to 1 or 2

RANGE SCHOOLS

Apply to 2 or 3

SAFETY SCHOOLS

Apply to at least 1

Do not compare the number of colleges you are applying to or types of colleges to your friends’ list. This is a very personal journey on what is best for YOU!!!!

Points to Consider

- ▶ Check Admissions Requirements.
- ▶ Most colleges only consider academic classes when calculating GPAs.
- ▶ Weighted and unweighted GPAs will be reported on your transcript.
- ▶ Class rank will not be included on transcripts or reported on secondary reports.
- ▶ Colleges want students who show an interest in their school.
- ▶ Undocumented students can apply to college & scholarships as well.

Understanding Application Types

- ▶ **Early Decision (I & II) : Binding**
 - ▶ Cannot apply early to other colleges, can apply regular decision.
 - ▶ If accepted, must attend
- ▶ **Early Action: Non-Binding**
 - ▶ Can apply early to other colleges, can apply regular decision
- ▶ **Single Choice/Restricted Early Action: Non-Binding**
 - ▶ Cannot apply early to other colleges, can apply regular decision
- ▶ **Rolling Admission**
 - ▶ Open admission, decisions given throughout the year not at a specific time
- ▶ **Regular Decision**
 - ▶ Deadline date established by the institution
- ▶ **Priority Deadline**
 - ▶ Similar to rolling admissions but priority given to those applicants who meet earlier priority deadline

2-Year Colleges & Technical Colleges

- ▶ See if the SAT/ACT is required- may take the Accuplacer Exam instead- check with each individual school
- ▶ Two-year school requirements - 2.0 GPA, 2 World Languages plus all Georgia graduation requirements
- ▶ Technical colleges – need proof of graduation

Military/Armed Forces

- ▶ **High School Diploma is required**
- ▶ **Take the ASVAB**
- ▶ **Make contact with branch recruiter**
- ▶ **Request your final transcript in May**

Questions/Preguntas



[https://bit.ly/
ParentQuestions2023](https://bit.ly/ParentQuestions2023)

Application Platforms

- ▶ Direct College Application

- ▶ One that the college created

- ▶ GAFutures Application – www.gafutures.org

- ▶ Many GA colleges use GAFutures to “house” their applications (a “mini” common app)

- ▶ Common Application - www.CommonApp.org



- ▶ The Common App has 900+ member colleges
 - ▶ Complete one “common” application and submit to many colleges
 - ▶ Many colleges require supplements, in addition to the “common” portion
 - ▶ Extra essays
 - ▶ Self-reported grades

- ▶ Coalition Application - <http://www.coalitionforcollegeaccess.org/>



- ▶ Over 150 institutions have joined
 - ▶ Similar to Common App

- ▶ Common Black College Application – www.commonblackcollegeapp.com

- ▶ 55 different HBCU's
 - ▶ One \$20 application fee to apply to all 55 colleges
 - ▶ Register for top 4 but can be accepted from any of the 55 colleges

- Many colleges utilize multiple options
 - They have no preference
- Use the application that is best for you.



GET EDUCated!



Familiar Schools that use Common App

Kennesaw
State – NEW
this year!!

Georgia
State

University of
Georgia

Georgia
Tech

Emory
University

Morehouse
College

Agnes Scott
College

SCAD

University of
North
Georgia

Augusta
University

Berry
College

Auburn

U of
Alabama

Florida State

U of Florida

U of
Tennessee

App State

UNC –
Chapel Hill

Duke

U of
Kentucky

Purdue

Stanford

Rice

NYU

And hundreds more!!

How to Pay for College!

- ▶ **FAFSA Opens Oct 1, 2022**
- ▶ **Scholarships!**
 - ▶ All scholarships housed in Naviance
 - ▶ No limit to how many you can apply to or how many you can "win"
 - ▶ Different kinds...not all based on grades/test scores
 - ▶ School specific
 - ▶ Merit (GPA & Test scores)
 - ▶ Athletic
 - ▶ Community Service
 - ▶ Based on Major or certain field of study
 - ▶ Race/gender/religion
 - ▶ Random
 - ▶ www.goingmerry.com; Use google!
- ▶ **Grants!!!! FREE MONEY from Government (most common: PELL Grant based on household income)**
- ▶ **Loans-Pay back with interest!**

First 50 to sign up
by Aug 31st will
be considered
for FREE College
Test Prep &
Collegiate
Writing
Workshops!

<https://bit.ly/EOCGSU>



Juniors and Seniors!!!!
Get started NOW!
LIMITED SPACE - SIGN-UP BY 8/31

Educational Opportunity Center is here to HELP!

Work with us to:

- 1) College/Program search
 - a) Create a college comparison chart
- 2) Create a college entry checklist
- 3) Create a scholarship spreadsheet
- 4) Collegiate writing workshop(s)
- 5) Test Prep services (where applicable)

**Take advantage of the following
free services:**

- 1) Application Fee Waivers (where applicable)
- 2) Financial Aid Counseling & Application Assistance
- 3) College/Career Counseling
- 4) Scholarship Application Assistance and so much more.

Limited space available so ACT NOW! [Click here](#) to fill out our EOC Online Application and get started today. *First come, first serve.* For questions contact us at gsueoc@gsu.edu

One Park Place, Suite 400, Atlanta, GA 30303

8:30AM-4:00PM

HOPE Scholarship Programs

HOPE Scholarship

- ▶ 3.0 HOPE GPA as calculated by GSFC (www.gafutures.org)
- ▶ 4 Rigor courses
- ▶ ~80% of tuition at Georgia public institutions (percentage at private)
- ▶ 2 year or 4-year degree
- ▶ Graduate from GA high school
- ▶ US Citizen or Permanent Resident

Zell Miller Scholarship

- ▶ 3.7 HOPE GPA as calculated by GSFC (www.gafutures.org)
- ▶ 1200 SAT or 26 ACT
- ▶ 4 Rigor courses
- ▶ 100% of tuition at Georgia public institution (percentage at private)
- ▶ 2 year or 4-year degree
- ▶ Graduate from GA high school
- ▶ US Citizen or Permanent Resident

Apply for HOPE by completing the FAFSA after October 1st

HOPE Grant Programs

HOPE Grant

- ▶ No initial GPA Requirement (2.0 required after 30 hour checkpoint)
- ▶ Covers a percentage of tuition
- ▶ Technical College or Certificate (like Chatt Tech)
- ▶ Must graduate from GA HS.
- ▶ HS Diploma or GED
- ▶ US Citizen or Permanent Resident

Zell Miller Grant

- ▶ No initial GPA Requirement (3.5 GPA required after 30 hour checkpoint)
- ▶ No test score requirement
- ▶ Covers 100% tuition at Technical college or certificate program
- ▶ Must graduate from GA HS.
- ▶ HS Diploma or GED
- ▶ US Citizen or Permanent Resident

Apply for HOPE by completing the FAFSA after October 1st

HOPE Career Grant- FREE TRADE PROGRAMS at Chatt Tech or other Tech Schools in GA.

- ▶ Aviation
- ▶ Automotive
- ▶ Engineer Assistant
- ▶ Commercial Truck Driving
- ▶ Computer Programming
- ▶ Computer Technology
- ▶ Construction
- ▶ Diesel Equipment Technology
- ▶ Early Childhood Care & Education
- ▶ Electrical Line Worker
- ▶ Health Science (Medical)
- ▶ Industrial Maintenance
- ▶ Law Enforcement & Criminal Justice
- ▶ Logistics
- ▶ Media Production/Set Design
- ▶ Practical Nursing
- ▶ Precision Manufacturing
- ▶ Welding & Joining Technology

The professionals in these fields earn GOOD MONEY, have successful careers and don't have a problem finding jobs if they are responsible, qualified and hard-working!

<https://www.gafutures.org/media/gf0o05s2/hope-career-grant-programs-of-study-fy2023.pdf>

Questions/Preguntas



[https://bit.ly/
ParentQuestions2023](https://bit.ly/ParentQuestions2023)

Naviance



NAVIANCE IS A *DELIVERY SYSTEM* AND COLLEGE/CAREER SEARCH ENGINE, BUT IT ALSO HOW WE COMMUNICATE WITH YOU AND YOUR PARENTS, THROUGHOUT THE YEAR.

Logging into Naviance

▶ www.cobbk12.org

OR

▶ www.cobbk12.org/pebblebrook

▶ Find It Fast (upper lefthand corner)

▶ Naviance

▶ Automatically will log you in via Clever

▶ Use Microsoft Office credentials if you are off-campus or on phone

Naviance Student Homepage

[Home](#)[Self-Discovery](#)[Courses](#)[Careers](#)[Colleges](#)[Planner](#)[About Me](#)[LOG OUT](#)

Welcome, Demo!

[Search for Colleges](#)[SEARCH](#)

Seniors, it is time to apply to college!

[English](#)[Go](#)

Depending on the institution, you may apply via the [Common Application](#) for some and directly on college websites for others. After applying, go to your "[Colleges I'm Applying To List](#)" to see or add colleges to the list, request transcripts and request teacher letter of recommendations. Once requests are submitted, you can monitor their status. See videos to learn more: [1.Common App Matching](#) [2. Transcript Requests](#) [3.Letters of Recommendation](#)

[Read more](#)

My Favorites

[COLLEGES](#)[I'm thinking about](#)[COLLEGES](#)[I'm applying to](#)[COURSES](#)[I'm thinking about](#)[CAREERS AND CLUSTERS](#)[I'm thinking about](#)

Important To-Dos and Tasks

What's New

Nothing new to review this visit. Check back later.



Enter Your Email Address

We need your email address so we can communicate important information with you. Please get in the habit of checking email frequently.

1. Click on the “About Me” link at the top.
2. Click on “My Account.”
3. Click on the Pencil Icon in the “Contact Information Box.”
4. Enter your email address.
5. Click “Save.”

****Use a NON cobb/school email address**

You can also use Naviance for...

- ❖ Career Planning
- ❖ College Planning
- ❖ Resume Building
- ❖ Communicating with your Counselor
- ❖ Scholarship Searches

USE THIS AS A GUIDE

SEVEN STEPS FOR USING NAVIANCE YOUR SENIOR YEAR

How to login into Naviance:
1. CCSD or PHS website
2. Find It Fast (top right corner)
3. Naviance
4. If you are on CCSD device, it will log you in automatically via Clever.
5. On a phone or off campus, enter your CTLS credentials for access to Naviance.
You can NOT google Naviance to login

1

APPLY TO YOUR DESIRED COLLEGE(S)

Apply to your colleges on the college's website or using application sites like: CommonApp, Black College Common App or Coalition App. You can NOT apply to college in Naviance!

2

ADD COLLEGE(S) TO YOUR "APPLYING TO" LIST IN NAVIANCE

You MUST include your intended deadline, how you are applying and your progress of the application.

3

REQUEST TRANSCRIPT

We do not send transcripts to schools you are "thinking about"! You must be actively applying to the college if it is in your "Applying To" list. Indicate which transcript you are requesting: Initial=First transcript you send; Mid=After 51 grades post (if requested by college); Final=After graduation

4

LETTERS OF RECOMMENDATION (IF NEEDED)

Not all colleges require LORs. We will not write one unless it is required. All CommonApp schools require teacher rec letter(s) & Counselor "School Report". Fill out survey called "Counselor Letter of Rec" or "CCCEPA Counselor Letter of Rec" one for Magnet students in Naviance/About Me/surveys section of Naviance. You MUST request Rec Letters 2 weeks in advance via email to Counselor. For teachers, email teacher to request LOR and then add them in Naviance in "Applying To" screen.

5

COMPLETE OTHER NECESSARY PARTS OF THE APPLICATION

Fulfill other necessary parts for the application submission like SAT and/or ACT scores from those perspective websites, essays, resume, personal statements, etc.

6

UPDATE "APPLYING TO LIST" AS NECESSARY

Adding new colleges, updating progress of application, accepted/waitlisted/denied

7

FINAL STEPS BEFORE GRADUATION

1. Complete Class of 2023 Graduation Survey in Naviance.
2. Once you have decided where you are attending, set your college "As Attending" under your "Applying To" list. This is where your final transcript will be sent after graduation.
*NOTE: These steps can't be started until before graduation.



While applying, don't forget about searching/applying for scholarships in the Colleges tab in Naviance.
FAFSA Application opens Oct 1st @ studentaid.gov

Add College to the “Colleges I’m Applying to”

- ▶ This is the section where students will spend most of their time.
- ▶ You can request letters of recommendation and transcripts within this section.
- ▶ You must also designate the application type within this section as well as indicate that you’ve applied to the school.

Colleges I’m applying to 🔍 Search for colleges

✓ **Your Common App account has been matched.**
Your FERPA status is not waived. You're ready to apply to colleges using Common App.

Manage Transcripts Application Milestones Compare Me

= extended profile available ➕ REQUEST TRANSCRIPTS REMOVE

 Cancel

Add New College Application

Which college are you applying to?

Georgia State University



Colleges already in your application list would be unavailable for selection.

App type

Early Action



I'll submit my application

Via Common App

☐

I've submitted my application

Add Application

*****Important to tell us how you are applying!*****

“Colleges I’m Applying to” Dashboard

	College	Type	Deadline		Expected Difficulty*	Transcripts	Office materials	Submission Type ⓘ	Application		
<input type="checkbox"/>	Emory University	ED	Early Decision	November 1	N/A		Pending		Unknown ▼	 EDIT	MORE ⋮
<input type="checkbox"/>	Georgia State University	EA	Early Action	November 15	N/A		Pending		Unknown ▼	 EDIT	MORE ⋮
<input type="checkbox"/>	Kennesaw State University	EA	Early Action	October 26	N/A		Pending		Unknown ▼	 EDIT	MORE ⋮

Submission Types



(Mail Only)-This icon represents colleges that only accept documents submitted via mail. The school does not accept documents electronically.



(Electronic)-This icon represents electronic destinations that accept documents electronically via Naviance eDocs



(Common App)-This icon represents Common App destinations that accept documents electronically via Naviance eDocs. It's important to note this icon means the student has explicitly chosen to apply via Common App and indicated "Yes" in **Family Connection > Colleges I'm Applying to**. However, on College tabs (showing the college profile) it indicates the fact that it's a CA college, but not whether the student is applying via CA.



(Unknown)-This icon is displayed when a student adds a Common App college but has not indicated whether or not he or she plans to apply via the Common App Online. This status does not prohibit you from submitting Common App forms for the student, but you will receive a warning message advising you that the student has not indicated their plan. A message is displayed to inform the school counselor that the student had not made a selection whether applying via Common App and submission would default to Common App delivery.



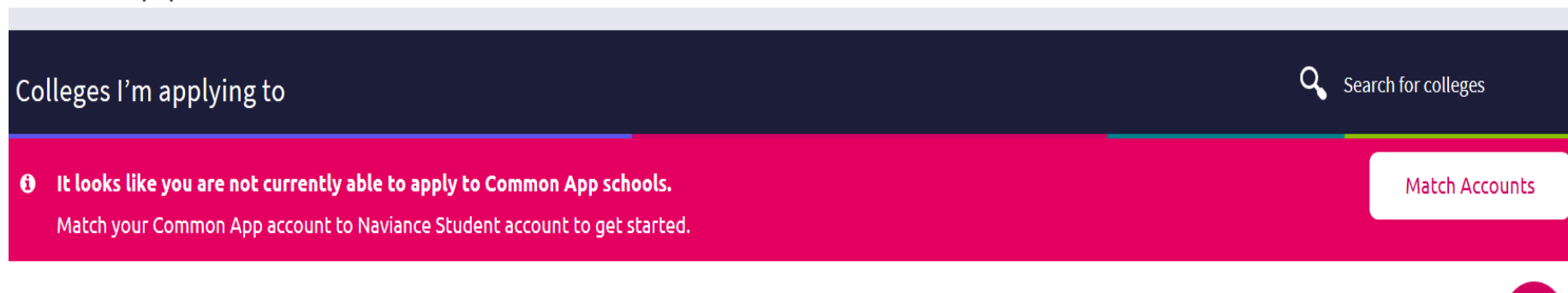
(Common App via Electronic)-This icon is displayed when a student has selected a Common App college and has indicated that he or she is not applying via the Common App Online. However, if the school is also an electronic destination (in addition to Common App) you can continue to submit documents (NACAC and other school forms, transcripts, and letters of recommendation) electronically.



(Common App mail only)-This icon displays when a student has selected a Common App college and has indicated that he or she is not applying via the Common App Online. However, the school is not an electronic destination so you will have to print and mail (other school forms, transcripts, and letters of recommendation) to the destination.

Common App Matching

- ▶ For Common App schools, students are required to match their Common App and Naviance Student accounts.



- ▶ In order to match the Common App account, students must first complete the following steps in their Common App account:
 - ▶ Complete the Education section of your Common Application
 - ▶ Add at least one college to My Colleges tab
 - ▶ Sign the FERPA Release Authorization

[Click](#) to watch video on common app matching.



Questions/Preguntas



[https://bit.ly/
ParentQuestions2023](https://bit.ly/ParentQuestions2023)



NCAA Eligibility ACADEMIC REQUIREMENTS

To play sports at a Division I or II school, you must graduate from high school, complete 16 NCAA-approved core courses, earn a minimum GPA and earn an ACT or SAT score that matches your core-course GPA.

The registration fee is \$90.

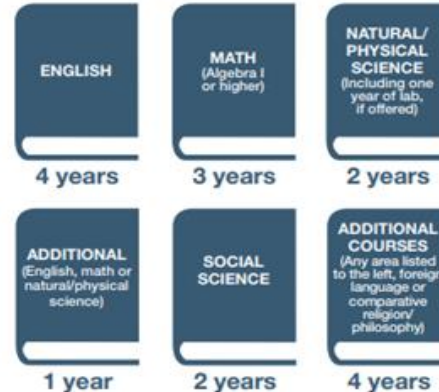
You are eligible for a waiver of the registration fee if you received a waiver for the SAT or ACT.

Test scores must be sent to NCAA using code 9999 when you register on the ACT and SAT website.

<https://web3.ncaa.org/ecwr3/>

Complete 16 core courses in the following area:

DIVISION I



Complete 10 NCAA core courses, including seven in English, math or natural/physical science, before your seventh semester.

DIVISION II



Gradpoint/Nova Net courses are not approved by NCAA



<http://www.naia.org/>

The registration fee is \$90.

You are eligible for a waiver of the registration fee if you received a waiver for the SAT or ACT.

Test scores must be sent to NCAA using code 9876 when you register on the ACT and SAT website.

Character-driven intercollegiate athletics at small programs.

Freshman Rules

Recent High School Graduates

If a student recently graduated high school, they must meet the following requirements:



Qualifying Test Scores

ACT SAT

18 970

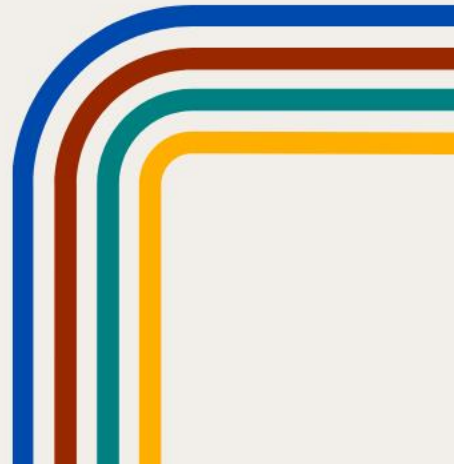
buy
your
yearbook
today



yearbookordercenter.com

ORDER

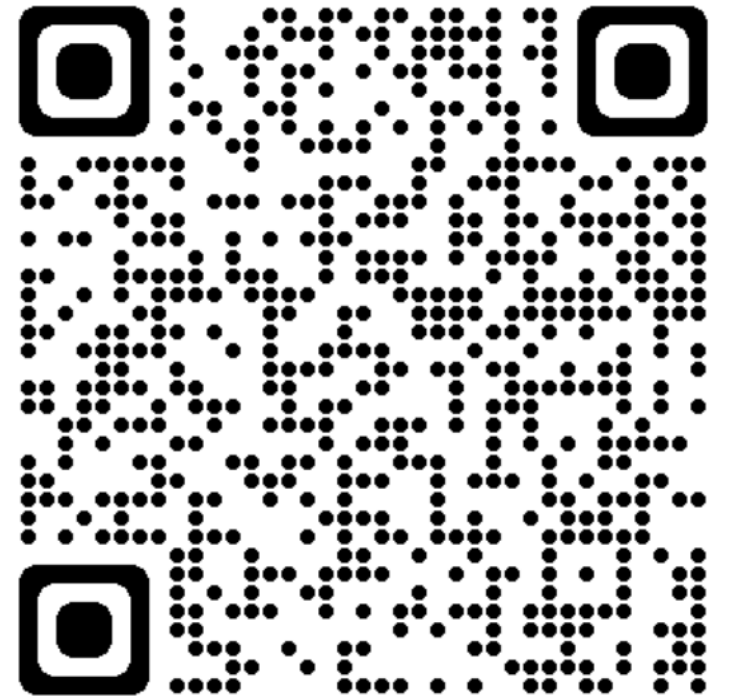
NUMBER: 328



senior ads
and senior photos
due
november 10th

home.cady.com

SCHEDULE SENIOR
PHOTOS TODAY!



Prom 2023

- ▶ Friday, April 21, 2023
- ▶ The Fox Theatre
- ▶ Tickets will be available on MyPaymentsPlus on a TBA date range
- ▶ Ticket deadline is VERY IMPORTANT!
- ▶ All questions can be directed to:
kimberly.harrell@cobbk12.org

Senior Remind Info



Text 81010 & the code below
according to the *student's last name*

- **A-C @pebsrac**
- **D-Ha @pebsrdha**
- **He-Mc @pebsrhemc**
- **Me-R @pebsrmer**
- **S-Z @pebsrsz**

- Senior Activity Fees (dues) are \$100 and can be paid on MyPaymentsPlus.
- The Senior T-shirt is included in the fees.
 - Submit t-shirt designs via email to Mrs. McGuire by 10/7

Heather.McGuire@cobbk12.org is the Senior Sponsor

Herff Jones-Cap & Gown company

- ▶ Herff Jones will be presenting graduation regalia information at 10am on Sept 21st at PHS.
- ▶ Order online after 9/21 on www.herffjonesatlanta.com
- ▶ The longer you wait to order the Cap & Gown, the price increases.
- ▶ Can also order invitations, swag and more!

Questions/Preguntas



[https://bit.ly/
ParentQuestions2023](https://bit.ly/ParentQuestions2023)

Thank you for attending!
¡Gracias por su atención!